

# Residential Extension to form Orangery

We were engaged to revisit the design of this single storey Orangery to a residential dwelling in Epping, Essex. The client wanted a single storey space to entertain in, which utilised the light from the open space in the garden, but didn't bring the draw backs of a conservatory.

The result was a single storey extension with a glazed Lantern and Haddon stone detailing to form the quoins and parapet wall. Detailed discussions were held with the client to ensure that the details of the lighting and technology requirements were included in the project and that no socket was missed.

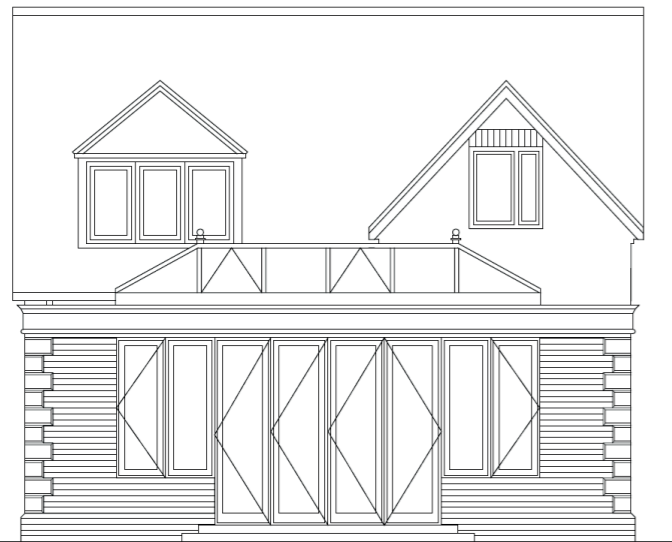
The end result was a simple space that offers room for entertaining and relaxing, with attention to the clients needs. The methodical approach from the contractor, DA Building and Plastering Contractors has allowed the team to produce this elegant addition to the property.

1

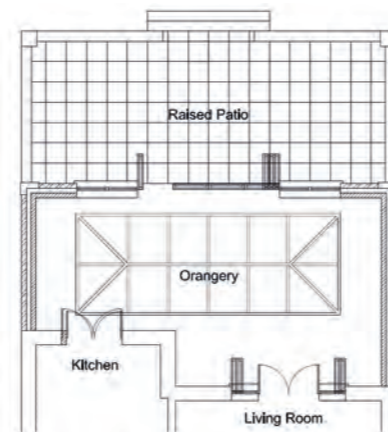
Design, Building Regulations & Project Management



Value 50 Thousand



Dayle Bayliss Associates LLP.



Epping, Essex.

